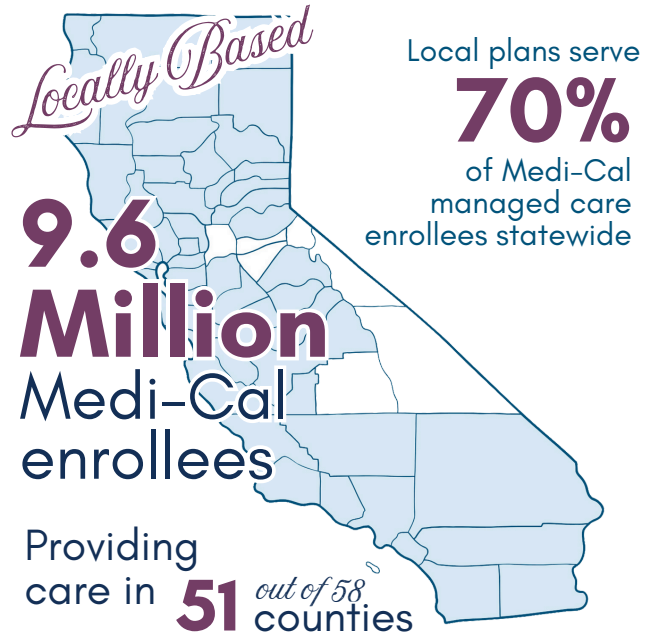




ABOUT LOCAL PLANS

Local Health Plans of California (LHPC) is a statewide trade association that represents all 17 of the community-based, not-for-profit health plans that provide access to critical and comprehensive health care services for low-income populations enrolled in California’s Medicaid program, Medi-Cal.



COMMUNITY INVESTMENT

Because local plans live and work in the communities they serve, they dedicate resources to improve community health, focusing on:

- Health Equity & Quality
- Food Stability & Nutrition
- Housing
- Workforce Development
- Community Health & Wellbeing

All plans are locally based operations with employees who live in the community

Created by their counties, local plans are community-based & locally governed

As mission-driven, not-for-profit organizations, local plans reinvest in their communities

17 MEMBER PLANS

Alameda Alliance for Health
 CalOptima Health
 CalViva Health
 CenCal Health
 Central California Alliance for Health
 Community Health Group

Health Plan of Imperial Valley
 Contra Costa Health Plan
 Gold Coast Health Plan
 Health Plan of San Mateo
 Health Plan of San Joaquin/Mountain Valley Health Plan

Inland Empire Health Plan
 Kern Family Health Care
 L.A. Care Health Plan
 Partnership HealthPlan of California
 San Francisco Health Plan
 Santa Clara Family Health Plan



2023 NCOA Ratings:
4-star ratings for Medi-Cal managed care were only awarded to **local plans**

PEOPLE CHOOSE LOCAL PLANS



3 out of 4
 when choice is available

MEDI-CAL COVERS 14.9 MILLION CALIFORNIANS

Including:



5 million children



2.2 million seniors and people with disabilities

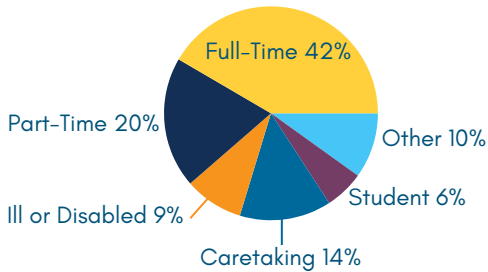


3.4 million working Californians

MANY MEDI-CAL ENROLLEES WORK

Medi-Cal provides health insurance to individuals and families with low incomes, including many low-wage workers who can't get affordable coverage at their job.

Nearly **2 in 3** nondisabled nonelderly adults in Medi-Cal work



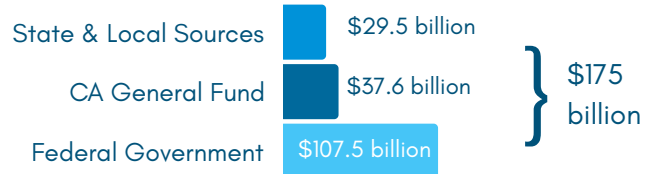
Source: CHCF - Do Medi-Cal Enrollees Work, January 2025

MEDI-CAL PROVIDES COMPREHENSIVE COVERAGE AT NO COST TO THE MEMBER
Most Services are Covered through Managed Care

Comprehensive Health Care & Care Coordination	Prescription Drugs*	Behavioral Health Care**
Enhanced Care Management & Community Supports	Transportation to/from Appointments	Long-Term Care
Maternity Care	Vision Care*	Dental Services*

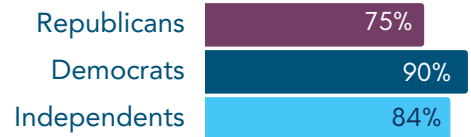
No asterisk carved into managed care; *carved out to FFS; **specialty mental health and SUD services carved out to counties

THE FEDERAL GOVERNMENT PAYS A LARGE PORTION OF THE MEDI-CAL BUDGET



Source: Understanding the Intersection of Medicaid and Work: What does the Data Say?, Kaiser Family Foundation, (April 24, 2023).

VAST MAJORITY OF AMERICANS VIEW MEDICAID AND MEDICARE FAVORABLY



Source: Kirzinger, A., Montalvo, J., III, Kearney, A., Sparks, G., Valdes, I., & Hamel, L. (2025, January 28). KFF Health Tracking Poll: Public weighs health care spending and other priorities for incoming administration | KFF.org

COMMUNITY REINVESTMENT

Nearly **\$800 million reinvested** in community-driven solutions and infrastructure projects **over the past 5 years.**

Collectively, local plans exceed a new Medi-Cal managed care contract requirement to reinvest a specific percentage of their net income into the communities they serve.

Investments support vulnerable populations and align with CalAIM's goals of fostering equity, justice, and a healthier future for all Californians.

